

# sum green

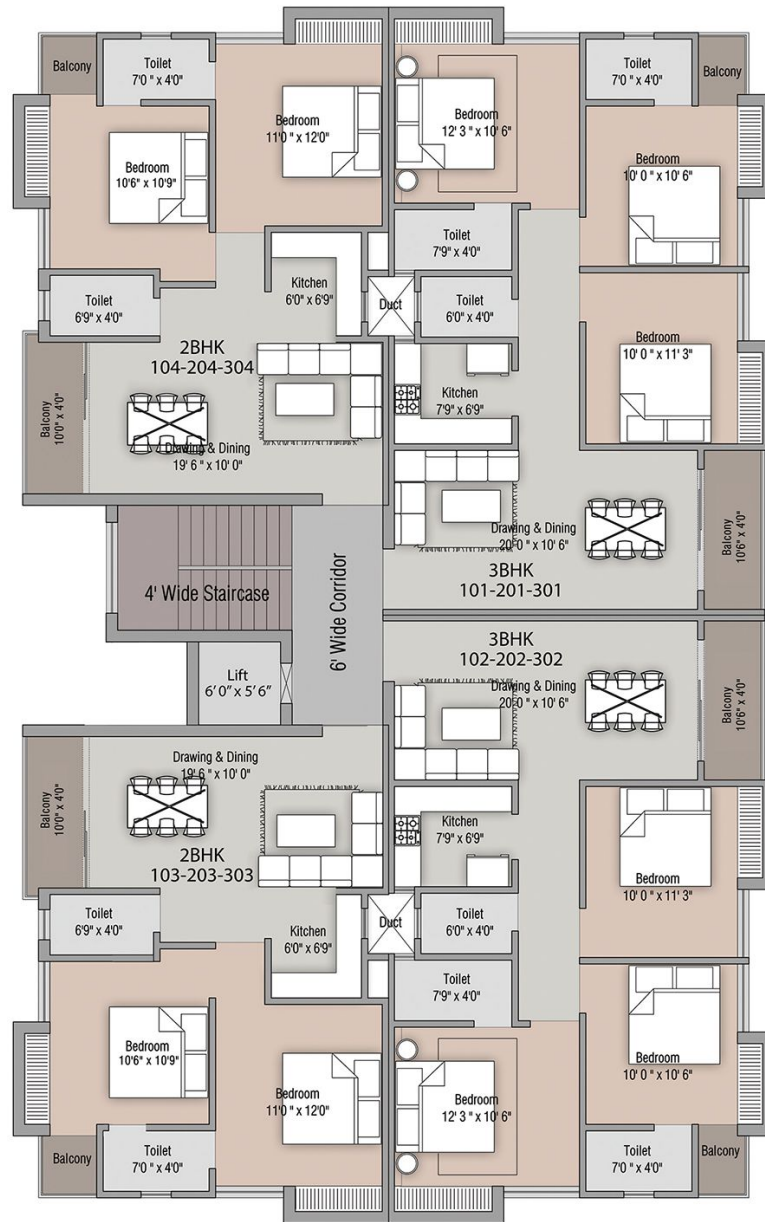
Set the tone of your lifestyle

Sum Green is set to become the center of new luxury by bringing together a rare combination of contemporary design, natural greenery and thoughtful amenities in surroundings that are private, yet well connected to daily urban life.

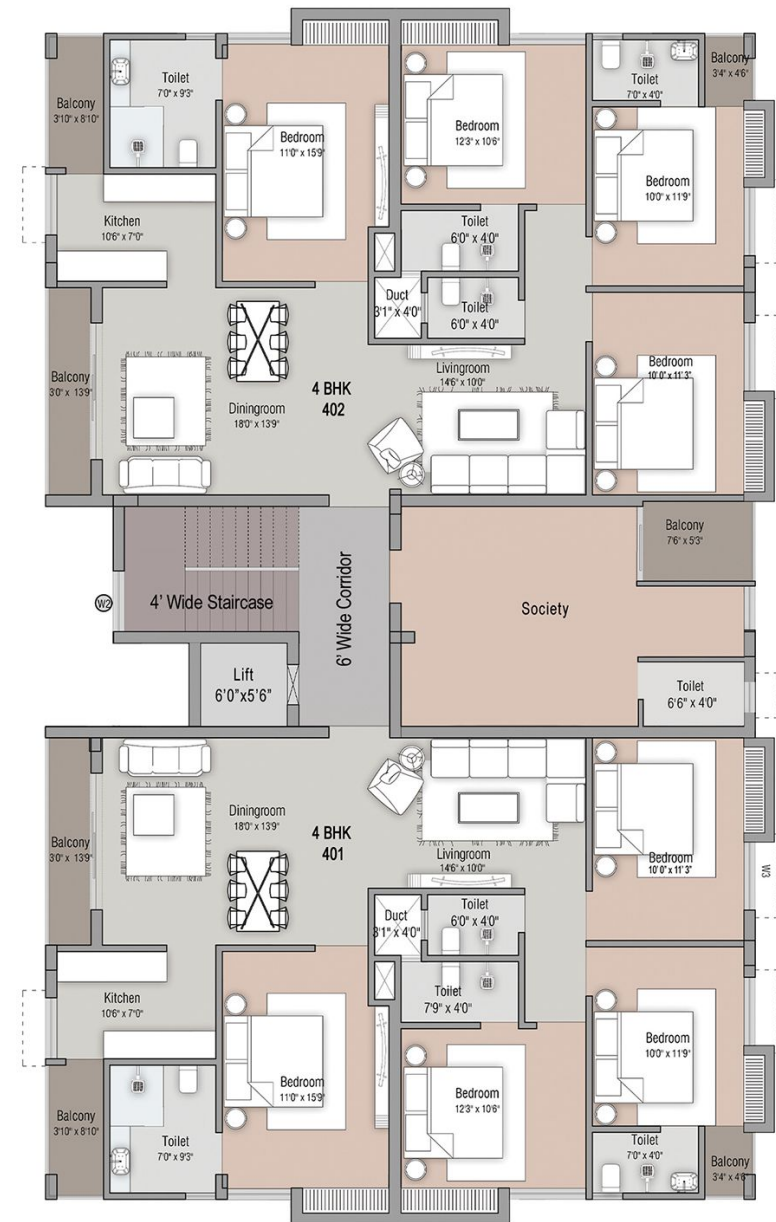


Image for representative purpose only  
Trees shown in the image are for representative purpose only





1<sup>st</sup>, 2<sup>nd</sup> & 3<sup>rd</sup> Floor



4<sup>th</sup> Floor



# SPECIFICATIOIS



## Structure:

Earthquake resistant RCC framed structure.

## Fittings:

Premium sanitary fittings & Cp fittings.

## Electrical:

Branded premium quality wires, concealed modular switch boards & fittings.

## Doors:

Main doors will be Teakwooden finished, inside are flush doors

## Power Backup:

24×7 power back on common space.

## Paint:

External (weather coat), internal (wall putty with white primer).

## Flooring:

600mm x 600mm size double charged verified tile, Granite at staircase and kitchen platform.

## Windows:

Upvc or equivalent material sliding glass windows and balcony doors protected with MS/SS grill at windows and balcony.

## Security:

CCTV vigilance.

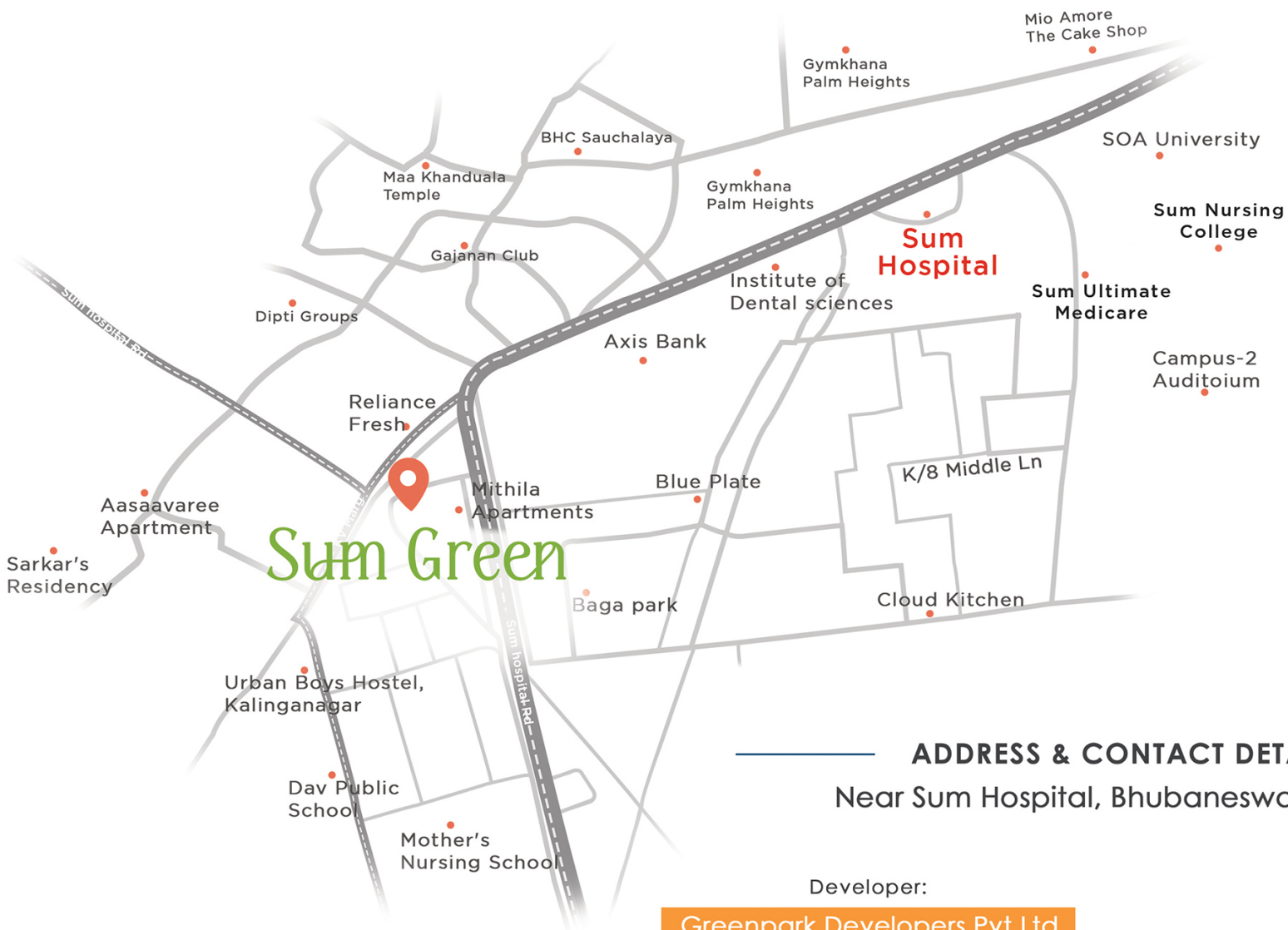
## Wastage Disposal:

Dustin tracks at common space on each floor.

## Security:

Gated community with CCTV vigilance facility around the site and land phones connecting to all flats.





**ADDRESS & CONTACT DETAILS**  
Near Sum Hospital, Bhubaneswar, Odisha

Developer:  
**Greenpark Developers Pvt Ltd**

Architect:  
**DENCITY**

Address: 108, Suryanagar, Bhubaneswar  
email id: greenparkdevelopers@yahoo.com  
Call: +91 94370 10539

Address: N2/14, IRC Village, Bhubaneswar  
email: mail@dencity.com  
Call: +91 9776 563257, +91 9040 658804